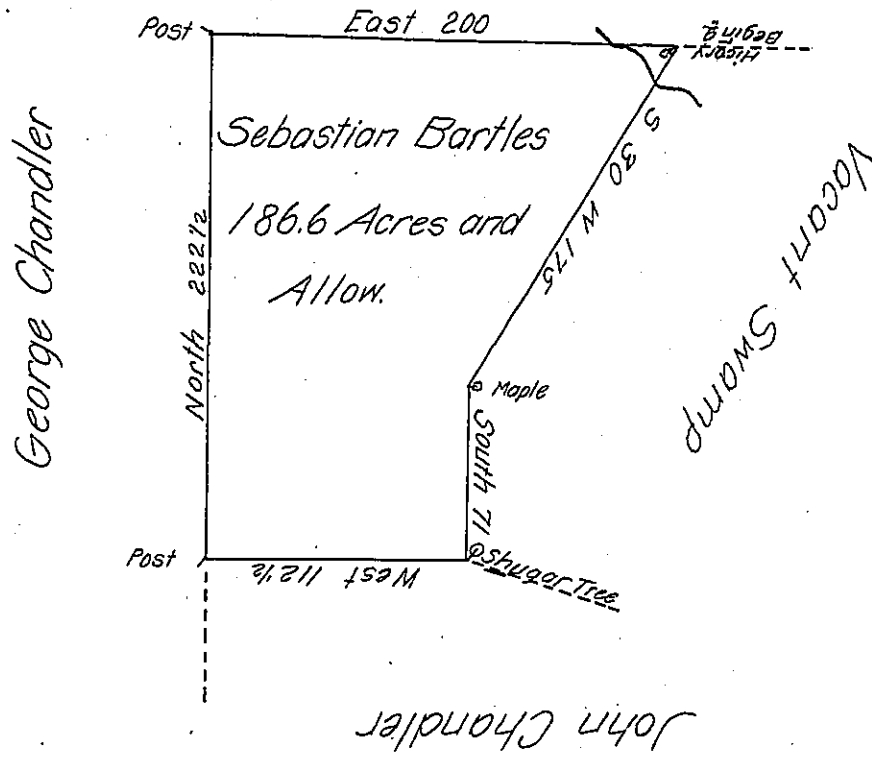


Peter Clyne



The Draught of a Tract of Land called St. Bartholemew situate near Pine Creek in the County of Cumberland containing One Hundred Eighty Six Acres One Hundred thirteen Perches with the usual Allowance of Six Acres P. Cent. for Roads Surveyd the 10th Day of October Anno Dom. 1766 In Pursuance of an Order of Survey N^o 285 to Sebastain Bartles Bearing Date at Philad^a. the 1st Day of August Anno Dom. 1766.

To John Lukens Esq. Surv^r Gen^l } P. W^m Maclay Depty Surv^r
of the Province of Pennsylvania }

IN TESTIMONY that the above is a copy of the original remaining on file in the Department of Internal Affairs of Pennsylvania, made conformably to an Act of Assembly approved the 16th day of February, 1833, I have hereunto set my Hand and caused the Seal of said Department to be affixed at Harrisburg, this twenty fifth day of January 1905

James B. Brown
Secretary of Internal Affairs.